

Year 9



 Broughton Hall  
Catholic High School

## Celebration of the Word

Theme: Safeguarding



# Belonging at Broughton



# We begin our prayer with 'The Sign of the Cross'

Leader: Let us remember that we are in the presence of  
God

*ALL: Let us adore him.*

## As we Gather, let us pray

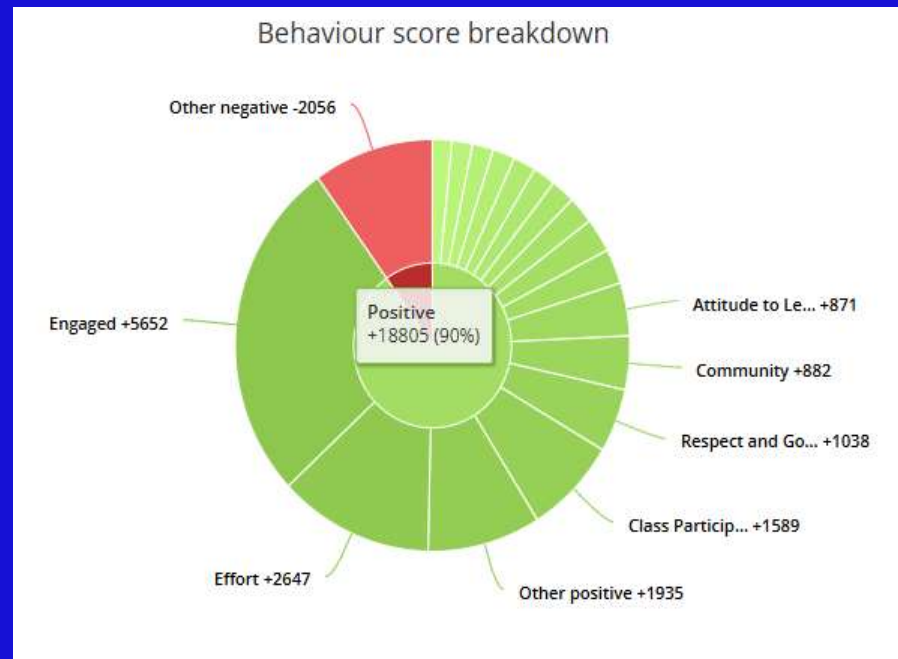
Dear Father God, help us on our journey through life.  
Thank you that you give us intervals, and changes in direction, to guide us closer to  
you and to our goals,  
Amen.



# Belonging at Broughton



# Positive Behaviour Shout Outs



# Shout Outs - Attendance

9NIC	90%
9OSC	92%
9THO	93%



# We Listen to the Word of God

## - Peter 3: 8-17

Finally, all of you should be of one mind. Sympathize with each other. Love each other as brothers and sisters. Be tender-hearted, and keep a humble attitude. Don't repay evil for evil. Don't retaliate with insults when people insult you. Instead, pay them back with a blessing. That is what God has called you to do, and he will grant you his blessing.

For the Scriptures say,

"If you want to enjoy life and see many happy days, keep your tongue from speaking evil and your lips from telling lies. Turn away from evil and do good. Search for peace and work to maintain it. The eyes of the LORD watch over those who do right, and his ears are open to their prayers. But the LORD turns his face against those who do evil."



# Safeguarding

“What is Safeguarding?”

- Protecting you from harm
- Helping you feel safe
- Supporting you to achieve your best



# Year 9 - Looking After Your Wellbeing & Relationships

Mental health is as important as physical health.

Talk about your feelings.

Get enough sleep.

Eat well and stay active.

Take breaks from screens.

Connect with others.

Take care of yourself. .

Ask for help if you need it.

Remember: it's okay not to be okay sometimes. Reaching out for help shows strength, not weakness. Taking small steps every day can help you stay mentally healthy and feel more confident about yourself and your future.



# Healthy vs Unhealthy Relationships

Healthy Relationships Look Like:	Unhealthy Relationships Look Like:
<ul style="list-style-type: none"> <li>✓ Respect — you value each other's opinions</li> <li>✓ Trust — you feel safe being yourself</li> <li>✓ Equality — decisions are shared fairly</li> <li>✓ Communication — you can talk honestly</li> <li>✓ Support — they encourage your goals and boundaries</li> <li>✓ Space — you can have other friends and interests</li> </ul>	<ul style="list-style-type: none"> <li>⊗ Control — checking your phone or telling you who to see</li> <li>⊗ Put-downs — constant criticism or humiliation</li> <li>⊗ Pressure — forcing you to do things you're not ready for</li> <li>⊗ Isolation — keeping you away from friends or family</li> <li>⊗ Anger or threats — using fear to get their way</li> <li>⊗ Disrespect — ignoring your feelings or boundaries</li> </ul>
<p>make you feel <b>safe, respected, and valued.</b></p>	<p>make you feel <b>scared, isolated, Anxious, insecure or disrespected.</b></p>



# WHAT IS PEER-ON-PEER ABUSE?

Peer-on-peer abuse is any kind of harmful behaviour that one child or young person experiences from another child or young person.

It can include different types of abuse, such as...

- bullying
- sexual harassment
- violence
- coercion

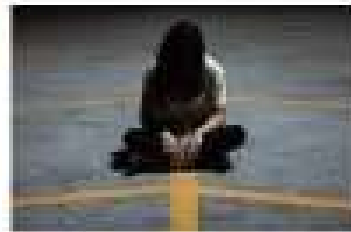


## Peer on peer abuse facts

1 in 3 girls have experienced sexual violence from a partner before they turn 18 years old.

1 in every 4 young people in the UK have been victims of bullying in the past 12 months.

At least 1 in 7 are sending sexts.



1 in every 5 (19%) children aged 10-15 experience cyber bullying.



Developing our learners for a life-long love of learning, who know more, think more and do more.



## Is it peer on peer abuse?

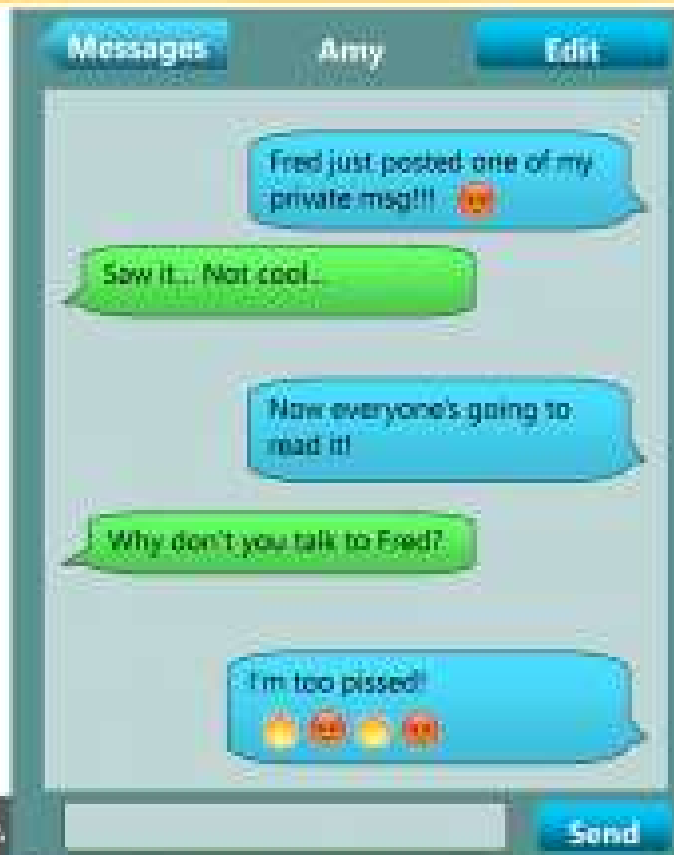
On the way home Sadia sits on the top deck, Amy sometimes speaks with her friends and comments on the way Sadia looks calling her 'ugly' and 'weirdo'. She doesn't think Sadia can hear.



Developing our learners for a life-long love of learning, who know more, think more and do more



## Is it peer on peer abuse?



Developing our learners for a life-long love of learning.



## Is it peer on peer abuse?



Sophie in year 9 knows Olivia in year 10. Olivia often asks Sophie to buy her lunch. Sophie doesn't want to say no as Olivia has lots of friends and she is worried that she will be called names or worse if she doesn't.

Developing our learners for a life-long love of learning, who know more, think more and do more.



# Online Risks

- KCSIE 2025 expands online harm risks: disinformation, conspiracy theories, AI-generated images. NSPCC: 19% of 10-15-year-olds spoke to strangers online. Online Safety Act 2023 gives platforms duty to reduce harmful content.



# Interactive - Myth-busting Quiz

- True/False: Sexting is harmless if it's between people the same age.
- True/False: Stress is normal and can be managed in safe ways.



# Where to Get Help

- School counsellor
- Safeguarding team
- CEOP for online exploitation, YoungMinds.
- KCSIE stresses 'early help' can stop problems escalating.



# Interactive - Myth-busting Quiz

- True/False: Sexting is harmless if it's between people the same age. (False - it's illegal and risky).
- True/False: Stress is normal and can be managed in safe ways. (True).



# Be Broughton



## Classroom Expectations



### Be on time

Attend all lessons  
Arrive on time



### Be ready

Bring equipment to lessons  
Wear correct uniform



### Be respectful

Use your manners  
Listen when others are talking  
Keep the classroom tidy



### Be responsible

Participate in learning  
Work hard, try your best  
Make positive choices



### Be safe

Follow rules and guidance  
Do not leave class without permission  
Mobile Phones are banned in school

School rules and our Mercy Values help ensure that everyone has the right to be part of a safe community



# Safeguarding Team



These are the Safeguarding leads in the school and will always listen if you have a worry



# Staying Safe



Need help or someone to talk to?



## Adults in school will

- Listen to you and note carefully what you tell us
- Not judge or make assumptions about you or a friend
- Tell someone in school who may help you
- Reassure you, your friend or family member
- Help you to sort it out
- Provide you with support

## To raise a concern or seek help

- Trust all members of staff to listen and act on what you tell us
- Speak to your Form Tutor, Support Manager, Head of Year or School Police Officer
- Speak to your family and ask them to talk to us
- Report bullying to an adult or via our online form

## Where else can I get help?

ChildLine - 0800 1111

Kooth App - online counselling

Text Shout - mental health support 85258

ChildLine

0800 1111

shout  
85258

here for you 24/7



## Safe at School

The safeguarding team meet every week to discuss how to keep you safe. Your PSHE lessons provide education that supports your safety. Our staff are here to help you!



The Heart Our Mind  
for each other and our school



# Final Message

- Strong minds. Safe choices. Support is here.



# Closing Prayer

Dear father God,

**M**ay our hearts be filled with Peace and Love,

**E**ach day, help us to learn.

**R**emind us, 'Mercy is your way',

**C**ompassion for the world.

**Y**ou have shown us how to live, one heart, one mind,  
together.

For Christ, His hands and feet we will be.

Your servants Lord Forever





## *Sister Catherine McAuley's Intercessions*

*May the God of Mercy bless and protect us all  
All: Amen*

*May the God of Peace comfort us in times of  
trial  
All: Amen*

*May the God of Love shine forth in our lives  
All: Amen*

*We finish our prayer with the sign of the cross*





*Go Forth, remembering*

*All:  
We are  
One Heart, One Mind,  
In Faith, Hope and Love.*

