



BROUGHTON NEWS

ONE HEART, ONE MIND

.....
Edition 114

February 7th 2025



Science Lessons preparing for International Day of Women and Girls in Science (February 11th) >

Then Jesus said, "Come to me, all of you who are weary and carry heavy burdens, and I will give you rest." – Matthew 11:28

Are you tired? Worn out?

Hardly surprising, given how long, cold and dark it's been this January. As we near the end of a busy term maybe somewhat exhausted!

But both physical and spiritual rest is at hand.

Jesus was sent to live among us as both God and man, a Saviour who understands our human plight.

Having lived on Earth as a man, Jesus recognises how the cares of this world can so easily become heavy burdens. burdens.

He knows how overwhelmed we feel. He understands our weariness. But thankfully, He does not leave us there. He invites us into freedom – into rest – taking up our burden and easing our worries and care.

And He doesn't stop there. He offers to teach us and guide us in a different way – a better way. His humility and gentleness leads us to green pastures and still waters where we can find rest for your soul.

For with the Lord at our side we are never alone, and the burdens of life are never too great to bear.

Broughton Hall Chaplaincy Team

**THEN JESUS SAID, "COME TO ME,
ALL OF YOU WHO ARE WEARY
AND CARRY HEAVY BURDENS,
AND I WILL GIVE YOU REST."
- MATTHEW 11:28 NLT -**



Weekly Prayer

Glory be to the Father

Glory be to the Father
and to the Son
and to the Holy Spirit,
as it was in the beginning
is now, and ever shall be
world without end. Amen.

Top Attendance Forms

96.7%	93.5%	98.2%
7FRA	8THO	9MAX
92.9%	91.3%	96.2%
10THO	11BER	12FRA

From our Archive

**SOME OF OUR PRIZE WINNERS.
PREFECTS.**



Names left to right:—
Back Row:
R. Murphy, E. Reynolds, E. Owens, P. Hughes,
E. Dougherty.
Front Row (sitting):
P. Sullivan, M. Twist, J. Reddy, E. Bone,
Bobbie (our Mascot).

Prize Winner Prefects 1943, including Bobbie the dog who was the school mascot.

Excerpt from the 1943 edition of the Broughtonia.



BROUGHTON HALL CATHOLIC HIGH SCHOOL

Yew Tree Lane, West Derby, Liverpool L12 9HJ

Telephone: 0151-541 9440 Fax: 0151-259-8448

E-mail: schooloffice@broughtonhall.com

Internet: <http://www.broughtonhall.com>

Head Teacher: Mrs S O'Rourke B.A. (Hons), PGCE

7th February, 2025

Mercy Values Focus - Community & Environment

Dear Families,

Our Mercy Values of Community and Environment are the focus of our final week of half term.

As part of this, we will be reminding all pupils of the importance of treating all members of our community with respect and kindness and how pupils should travel around school, supporting a calm and safe environment for pupils and staff.

To ensure safeguarding measures are followed, please remind your daughters that mobile phones must be turned off and kept in blazers, and ear pods are not to be worn. Our policy "*see it, hear it, hand it in*" will be consistently applied by all staff for any phones / ear pods seen or heard and our behaviour policy followed for any pupil who does not comply.

Wearing uniform showcases a strong sense of pride in being part of Broughton Hall and provides a sense of belonging to our Broughton community. We therefore insist that all pupils wear full and correct uniform, as this consistency will help ensure high standards are maintained. All pupils are to wear their blazers; coats must be black and taken off inside the building. Pupils are not permitted to wear trainers, and hair must be tied back.

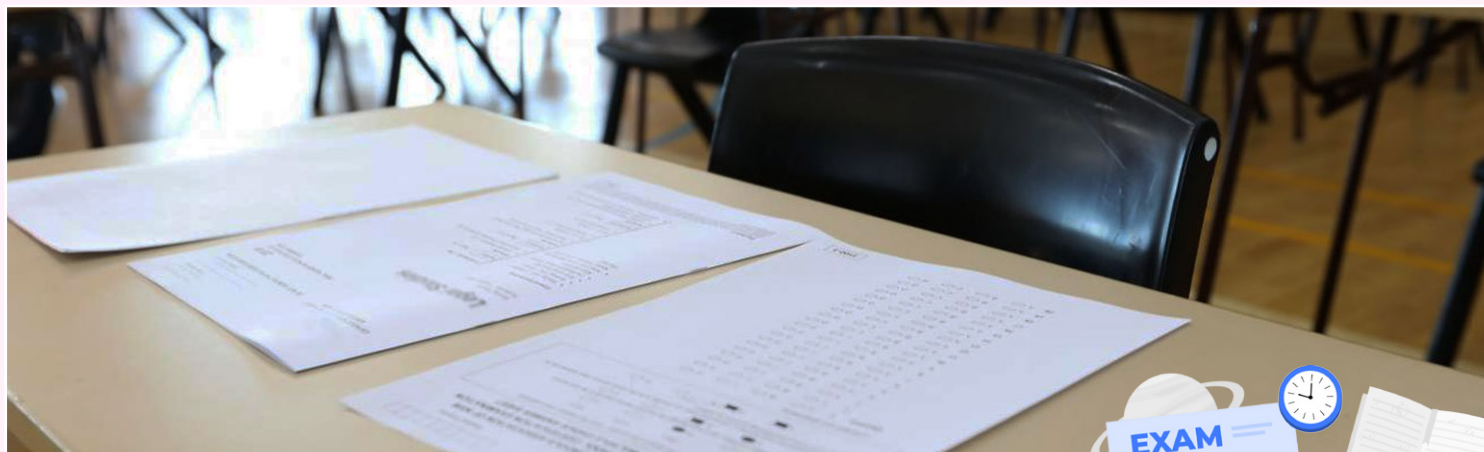
To acknowledge the many pupils who will demonstrate these values exceptionally throughout the week, we will be asking staff to award pupils with positive points for *Mercy Values* during form, in lessons and throughout the school day. Those pupils who are rewarded with the most points will be recognised for their contribution to our Community and Environment values.

Thanks to all families who responded to our Behaviour Survey. We had an excellent response and will be using feedback to help inform changes to our Behaviour Policy, ensuring Broughton Hall Catholic High School is a school that maintains the highest of standards where our pupils can thrive and succeed.

Thanks for your support,

Mrs K Hayes
Deputy Head Teacher





Year 11 Mock Exams

Mock exams begin for Year 11 on the 3rd of March. Over the next half term there are also external practical exams in Food Tech subjects and Music, we wish our pupils the best of luck in these important milestones in their KS4 journey. The countdown to GCSE written papers begins after half term with approximately 9 weeks until the exam season begins. We hope our pupils use the opportunity to complete their mock exams to the best of their ability so they can receive meaningful feedback from their teachers with regard to strengths and areas of development in each subject before the exams begin.



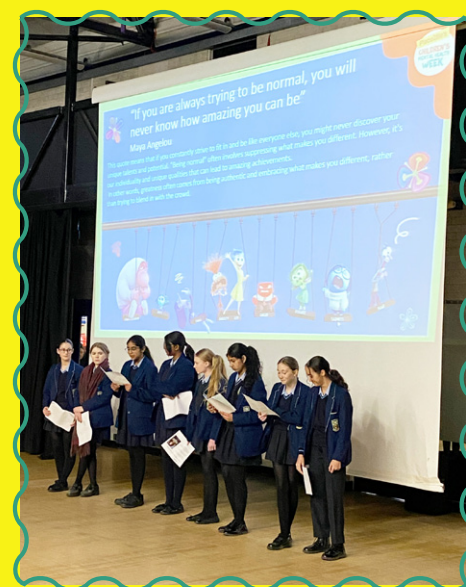
KNOW YOURSELF, GROW YOURSELF

Place2Be's
CHILDREN'S MENTAL HEALTH WEEK

This year's Children's Mental Health Week theme is **Know Yourself, Grow Yourself**.

Children's Mental Health Week: 'Know Yourself, Grow Yourself'

This week, we are proud to participate in Place2Be's Children's Mental Health Week. The theme for this year is 'Know Yourself, Grow Yourself, linked to the emotions in the Pixar film 'Inside Out'. The focus is the importance of self-awareness and personal growth for our development and happiness.



Our Mental Health and Wellbeing Ambassadors delivered an insightful assembly to all year groups, focusing on self-awareness and building resilience. This initiative aims to help students understand themselves better and foster their growth and development.

In a collaborative effort, students from all year groups contributed to a display in the glass corridor, curated by our ambassadors. The display creatively illustrates that while everyone encounters challenges (symbolised by raindrops), these obstacles can lead to growth and positive outcomes (symbolised by flowers).

Students wrote suggestions on the flower petals, offering solutions and positive traits such as resilience, creativity, patience, and teamwork. These contributions are intended to support and inspire peers who may be experiencing difficult emotions.

Across the country, a record number of young people started their Duke of Edinburgh's Award in 2023/24 for the third year running. The Duke of Edinburgh Awards annual statistics reveal that 330,984 young people started their DofE, with participants giving a huge 4,725,825 million hours of volunteering in communities all over the UK as part of their programmes – a huge leap of 33% on 2022/23! More than 545,000 young people are actively doing their DofE nationally, and 30% of 14-year-olds in the UK started their Bronze last year.



Broughton Hall Catholic High School

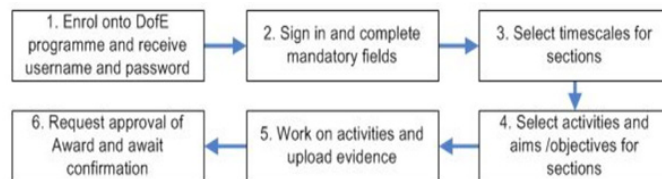
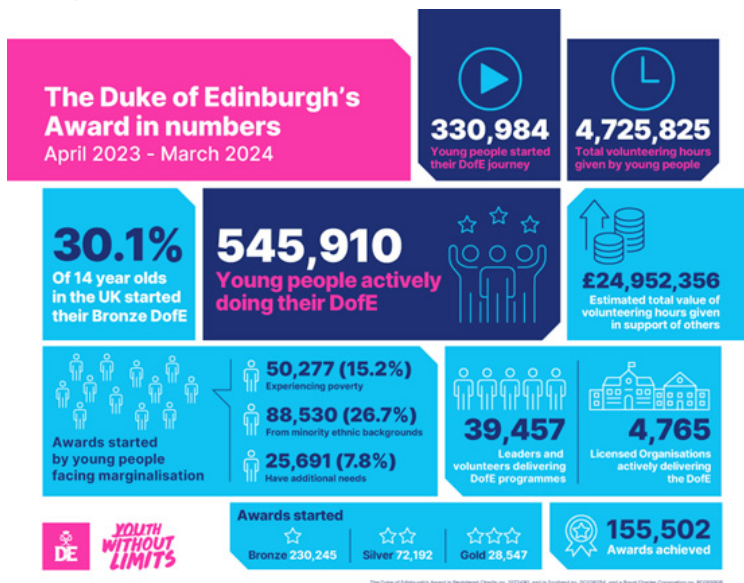
Bronze Duke of Edinburgh Award

Following an assembly last month, Year 9 pupils were asked to complete an 'early interest form' which gave them more information about the Award. Pupils were also asked to consider why they would want to take part as well as what activities they would hope to organise for their volunteering, skills and volunteering sections.

Enrolment forms have now been given out to these pupils in an after school meeting (Thursday 6th February). They need to be filled in, signed by both pupils and parents and returned on Monday 10th. Parents and carers of these pupils should soon see a new payment item (Bronze D of E 2025) appear on Parent Pay. Once the initial deposit has been paid, I will be able to purchase the participant places and create their online e-DofE accounts. I will meet with pupils to take them through the logging on process early next term. Pupils can access their online accounts via an app. and should be regularly checking their school e-mails for any messages and reminders.

Silver Duke of Edinburgh Award

Pupils in Year 10 have now began their Silver Award. Those who have enrolled in this next, more challenging level of the Award have had their online e-DofE accounts created. Several have already started their volunteering, skills and physical sections. Silver Award pupils who have yet to submit their plans for any of the three sections need to do this by Friday 14th February. The sooner they start, the sooner they finish! Provisional dates for the planned day walks and expeditions will be given out early next half term. More information about the Duke of Edinburgh can be found at dofe.org Alternatively you can e-mail me any questions at halewoodj@broughtonhall.com – Mr Halewood D of E Manager



Job of the WEEK



Find out more..

Broughton Hall Catholic High School **PE Department**

Raffle Winner

Congratulations to Kitty D our raffle winner. Kitty chose a new water bottle as her prize, to keep herself hydrated when at Dance Company. Kitty has attended numerous Dance afternoons and is part of the BH Dance Company squad.

She is committed to her team and displays a love of dance each week she attends!



SEND Intervention Spotlight

Social Communication

This intervention gives students the chance to develop an understanding of what social communication is and to work on understanding and improving the specific areas of listening skills, awareness of body language and conversational skills. Students learn how to recognise and interpret the body language of others, while also being aware of their own body language and what they might be conveying to others, intentionally or otherwise.

A running theme throughout this intervention is the need to think about others, how to care for and consider their emotions and as such, there is an introduction to empathy and to emotional literacy. We apply the theory to real life situations, both at home and at school and discuss tips and tricks to manage skills that some find difficult, such as eye contact.

Year 11 Mock Examinations Revision Timetable

	BOTH WEEK A AND B				
	MONDAY	TUESDAY	WEDNESDAY	THURSDAY	FRIDAY
8:10- 8:30 AM			Science HAPs Breakfast Club	Science Mentees – Breakfast Club	
1:20-2:00 PM	Spanish- Higher and Foundation	Mrs Smith's Maths	Geography (Aiming 7-9) Art	RE	
3:00 – 4:00 PM	Geography	Maths- Higher and Foundation	Science- Higher and Foundation	English- All pupil's welcome	History
	iMedia	Photography	Textiles	Hospitality and Catering	Spanish
	Computer Science	Art	GCSE Dance 3-5pm	Photography	PE Intervention Invite only
			Art	Art	



**International Day of
Women and Girls in
Science, 11 February
2025**

RAIL INDUSTRY APPRENTICESHIP WEBINAR

- Ready to Build the Future of rail?
- Want to Learn Skills That Keep the Nation Moving?
- From Project management to engineering to train driving apprenticeships, join us to learn more! Find out about opportunities and how to apply for apprenticeships in Rail.



19/02/25



10:00
AM

JOIN US



SCAN ME

[CLICK HERE FOR LINK](#)



AUREOS

200
Years of Great Britain
Since 1825

LNER
LONDON NORTH EASTERN RAILWAY

MURPHY
WORLD-CLASS INFRASTRUCTURE



NetworkRail



**SONG
ACADEMY**

#SAYS25

YOUNG SONGWRITER COMPETITION 2025

1st February - 31st March

STAR JUDGES INCLUDE

**TOM GRENNAN
NINA NESBITT
MIRANDA COOPER
MNEK
CALUM SCOTT
EG WHITE
TOBY GAD
GAYLE
FREDDY WEXLER
CONNIE TALBOT
DAN GILLESPIE SELLS
PLESTED
HANNAH V
EMILY PHILLIPS
NAUGHTY BOY
KENNY BARBER**




GREAT PRIZES

- RECORDING SESSION WITH A TOP PRODUCER
- SHURE SM58 + MVX2U INTERFACE
- FOCUSRITE SCARLETT SOLO GEN 4 STUDIO BUNDLE + NOVATION LAUNCHKEY
- IK MULTIMEDIA TOTAL STUDIO MAX 3.5
- 1 YEAR MEMBERSHIP OF AD LIB.
- PERFORM AT THE SAYS25 LIVE SHOWCASE

AGED 8-22?

ENTER YOUR ORIGINAL SONGS!

www.songacademy.co.uk/SAYS25

 Spotify® (—) Soundtrap®



Focusrite®



 YouTube Music

PHYSICAL EDUCATION

EXTRA CURRICULAR ACTIVITIES

TUESDAY

🏃 Year 11 WJEC PE - HSK - A5

🕒 3-4PM

⚽ Football - DDA - SH

🕒 3-4PM

WEDNESDAY

🤸 Trampolining - NLA - SH

🕒 3-4PM

🩰 Year 11 GCSE Dance - ALA - DD

🕒 3-5PM

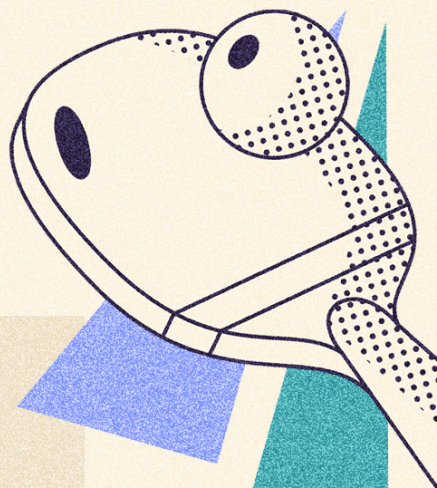
🩰 BH Dance Company - DD

🕒 3-4PM

If your daughter has an injury and needs her PE tasks adapted for her, please inform her PE teacher using one of the email addresses below. Pupils must bring their kit to school and change for the lesson on all occasions (unless in exceptional circumstances).

CONTACT DETAILS FOR PE STAFF:

Miss D Dawson - Head of PE and Dance - dawsond@broughtonhall.com
Mrs H Skinley - skinleyh@broughtonhall.com
Miss N Lawrence - lawrencen@broughtonhall.com
Miss A Lane - lanea@broughtonhall.com
Mrs K Hayes - hayesk@broughtonhall.com





Mini Bus Fundraising!

A big thank you to our amazing supporters who raise free funds for us on #easyfundraising. If you're not signed up yet, please join today and you can raise free donations for Broughton Hall Catholic High School every time you shop online.

All the big names like John Lewis & Partners, Expedia, Argos, Just Eat and many more are ready to make a free donation at no extra cost to you. Plus, when you sign up today, we'll get a £5 bonus:

Join us now!

easyfundraising

